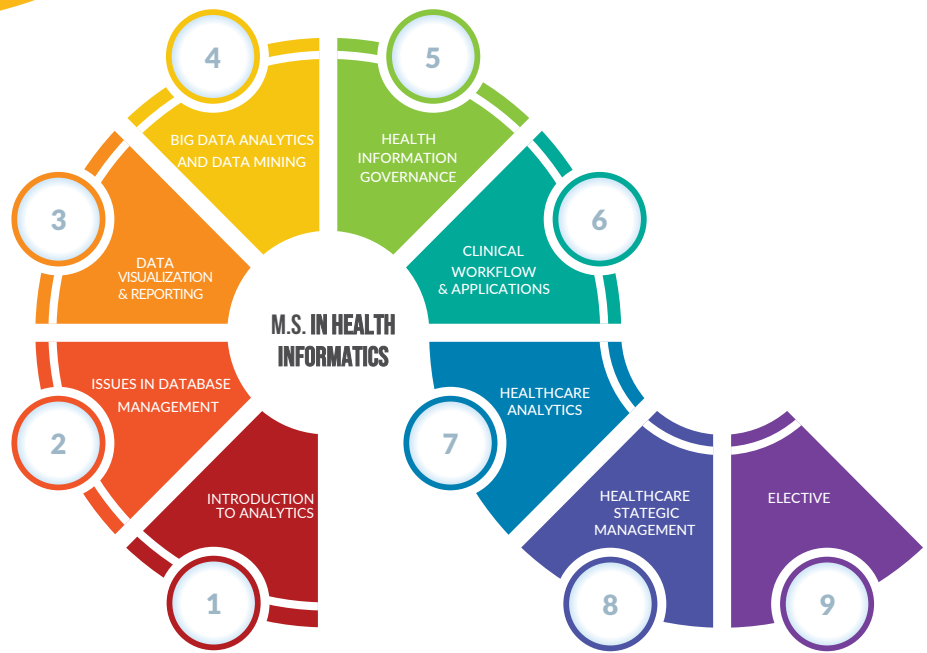


M.S. in Health Informatics

Program Fee
\$24,120
36 credits

M.S. in Health Informatics

Franklin MS in Health Informatics explore how to implement your competence for data analysis in a role that allows you to inform decision making, improve efficiencies, and ultimately improve patient care and outcomes.



**GRADUATE IN
16 MONTHS**



**HANDS-ON
CURRICULUM**



**INDUSTRY
RECOGNIZED**

For admissions:

admissions.franklin@leedsmanagementservices.com

LEEDS Management Services is exclusive representative of Franklin University (Asia Pacific)

LEEDS
MANAGEMENT
SERVICES

M.S. in Health Informatics



PROGRAM DETAILS

Accurate and reliable data analysis is central to a healthcare organization's ability to deliver on its mission to efficiently deliver quality care. The M.S. in Health Informatics can help you lead and facilitate change in the emerging field of health informatics. You'll learn how to channel your talent for data analysis into a role in which you can inform decision making, improve efficiencies and ultimately improve patient care and outcomes.

DEVELOP A MULTIDISCIPLINARY APPROACH TO CREATING AND SUSTAINING HEALTH INFORMATICS

As part of the M.S. in Health Informatics curriculum, you'll develop your competency in key areas including data analytics, math and computer science. You'll learn from highly qualified faculty members with extensive expertise within each discipline. Your in-depth, 12-week courses in data analytics, database management, and data visualization and reporting will prepare you to integrate information technology systems, applications and principles into the short- and long-term goals of a healthcare organization.

You'll learn how to collect, analyze and prepare data to create dashboards that communicate critical business insights. You'll learn to use the most popular visualization tools to structure and streamline data to highlight implications.

You'll take an enterprise-wide look at various types of data collected by an organization as a way of learning the concepts and methods for managing, maintaining and securing that information. In addition, an introduction to data analytics will provide you an opportunity to familiarize yourself with current statistical software, statistical inference methods for informed decision making, and ethical principles of data analytics.

RECOMMEND POLICIES, PROCEDURES AND SYSTEMS THAT MANAGE INFORMATION AS A HEALTHCARE ASSET

As part of your Health Information Governance course, you'll examine healthcare policies, guidelines, standards, processes and controls required to manage health information at the enterprise level. You'll recognize that health information is not only a necessary element for treatment, but also a significant part of a business case, and as such, protocols to manage and maintain the integrity of that information are invaluable to individuals, to organizations and to the healthcare industry.

In your examination of the requirements for clinical workflow and application, you'll take a closer look at the link between improving patient care to clinical workflow mapping and change management.

TAILOR YOUR STUDIES TO YOUR INTERESTS

Your six-week capstone course is the culmination of your master's-level studies and an opportunity for you to identify a healthcare issue and address it through a health informatics solution. You will assess a real-world situation that interests you and propose a strategic solution, as well as implementation and evaluation plans.

HEALTH INFORMATICS (M.S. IN HEALTH INFORMATICS REQUIREMENTS)

32 Semester Hours

Earn your M.S. in Health Informatics by taking 6 and 12-week courses. The program is comprised of eight required core courses. Choose from three start dates each year.

Required Courses

MATH 601 - Introduction to Analytics (4)
COMP 630 - Issues in Database Management (4)
DATA 605 - Data Visualization & Reporting (4)
DATA 610 - Big Data Analytics and Data Mining (4) AND DATA MINING
HIM 702 - Health Information Governance (4) HEALTH INFORMATION GOVERNANCE
HIM 710 - Clinical Workflow & Applications (4) CLINICAL WORKFLOW & APPLICATIONS
HIM 761 - Healthcare Analytics (4) HEALTHCARE ANALYTICS
HCM 772 - Healthcare Strategic Management (4) HEALTHCARE STRATEGIC MANAGEMENT

Be sure to check the current Academic Catalog to ensure you're using the most accurate degree requirements.

FEATURES & BENEFITS

- Hands-on coursework
- Contemporary curriculum
- Embedded Graduate Certificate in Data Analytics
- 6- and 12-week courses
- Finish in 12 months

Entry Requirements

Academic Requirements:

Must have completed valid bachelor's degree with 2.75 GPA (4 scale)

English Requirements:

Prospective students must demonstrate proficiency in the English language for academic purposes with a test date no more than two years old. Minimum scores are listed below:
Duolingo english test: Score of 110
TOEFL score of 550 (paper-based),
79 (Internet-based)
IELTS (Overall band 6.5 with no band less than 6.0)

More Information

M.S. in Health Informatics:
franklin.edu/degrees/masters/health-informatics

College of Health & Public Administration:
franklin.edu/cohpa